



POWDER COATING EQUIPMENT USER'S MANUAL

E-FEED+3

MOBILE SIEVE



Check our
product
online

electron.com.tr + info@electron.com.tr

 **Electron**

+3

© 2024 Sistem Teknik Makina A.Ş.
All rights reserved.
10010 St. No: 10
35470
İTOB Menderes
Izmir TURKEY

No part of this document may be reproduced or transmitted in any form or by any means, electronic or mechanical, for any purpose, without the express written permission of Sistem Teknik Makina San. Ve Tic. A.Ş. Under the law, reproducing includes translating into another language or format.

As between the parties Sistem Teknik Makina San. ve Tic. A.Ş. retains title to, and ownership of, all proprietary rights with respect to the software contained within its products. The software is protected by International copyright laws and international treaty provision. Therefore, you must treat the software like any other copyrighted material (e.g. a book or sound recording).

Every effort has been made to ensure that the information in this manual is accurate. Sistem Teknik Makina San. Ve Tic. A.Ş. is not responsible for printing or clerical errors. Information in this document is subject to change without notice.

Table of Contents

1- Safety Regulations	2
1-1 Safety Symbols	2
1-2 Conformity of Use	2
1-3 Special Types of Hazard	2
1-4 Safety Requirements for E-FEED+3 Mobile Sieve.....	3
2- E-FEED+3 Mobile Sieve General Information.....	3
2-1 Field of Application	3
2-2 Technical Data	4
2-3 Mobile Sieve Variants.....	5
2-4 Technical Specifications.....	5
2-5 Grounding.....	6
2-6 Space Requirements.....	7
2-7 Installations.....	7
3- Start Up	8
3-1 Operation.....	8
4- Cleaning and Maintenance	10
4-1 Cleaning	10
4-2 Maintenance.....	10
5- Powder Coating Capacity Table	11
6- Spare Parts List	24
7- Service and Maintenance Table	25
8- Product Life and Warranty.....	25

1. Safety Regulations

This section sets out the fundamental safety regulations that must be followed by the user and third parties using the E-FEED+3 Mobile Sieve. These safety regulations must be read and understood before the E-FEED+3 Mobile Sieve is used.

1.1 Safety Symbols

The following warnings with their meanings can be found in the Sistem Teknik Makina operating instructions. The general safety precautions must also be followed as well as the regulations in the operating instructions.



DANGER!

Live electricity or moving parts are dangerous.
Possible Consequences: Death or serious injury.



WARNING!

Improper use of the equipment could damage the machine or cause it to malfunction.
Possible consequences: Minor injuries or damage to equipment.

1.2 Conformity of Use

1. E-FEED+3 Mobile Sieve is built to the latest specification and conforms to the recognized technical safety regulations. It is designed to sieve powder paint.
2. Any other use is considered as non-conform. The manufacturer is not responsible for damage resulting from improper use of this equipment; the end-user alone is responsible. If the E-FEED+3 Mobile Sieve is to be used for other purposes or other substances outside of our guidelines then Sistem Teknik Makina A.Ş. should be consulted.
3. Observance of the operating, service and maintenance instructions specified by the manufacturer is also part of conformity of use. The E-FEED+3 Mobile Sieve should only be used, maintained and started up by trained personnel, who are informed about and are familiar with the possible hazards involved.

1.3 Special Types of Hazard

1. Power: All the high voltage equipment should be unplugged before opened. This is a huge life risk thus it has to be taken under great care.
2. Powder: Powder/air mixtures could be ignited by sparks. Sufficient ventilation is a must while using powder spraying equipment. Powder, which is not swept from the floor creates risky environment.
3. Static Charges: These could result in the following: Charges to people, electric shocks, sparks. Charging of objects has to be avoided.
4. Grounding: All electricity conducting parts and machinery in the workplace must be earthed 1.5 mt on either side and 2.5 mt around each booth opening. The grounding resistance must amount to a maximum of 1 M Ohm. Resistance has to be tested regularly. The appropriate devices must be kept in the workplace for regular grounding checks.
5. Compressed Air: Compressed air could be created after long pauses of the equipment and this creates risk of pneumatic hose damage or uncontrolled release and improper use of compressed air. Compressed air should be drained properly.

1.4 Safety Requirements for E-FEED+3 Mobile Sieve

1. All the equipment used for powder coating is dangerous unless the instructions are not conformed.
2. Every electrostatic conductive part must be earthed within the 5 meter radius from the equipment.
3. The floor of the coating area should conduct electricity (Concrete is generally a conductive surface, check with your building project for more info)
4. The users should wear electricity conducting footwear.
5. If gloves are going to be used, make sure that they conduct electricity.
6. Grounding cable must be connected to the grounding screw of the mobile sieve appliance. It should have a good connection with the booth, hopper and conveyor chain (if used).
7. E-FEED+3 Mobile Sieve Device must be switched off while the it is being cleaned.
8. The grounding must be checked every week. Remember that the grounding resistance must be 1 M Ohm at a maximum.

2. E-FEED+3 Mobile Sieve General Information

This operating manual contains all the important information which you require for the working with the sieve machine. It will safely guide you through the start-up process and give you references and tips for the optimal use of your new powder coating system.

2.1 Field of Application

E-FEED+3 mobile sieve is a new mobile system that sieves the paint that is owned by the user or that has been conveyed by the recovery system. Any other usage is non-conform. Electron is not responsible for the non-conform usage.



E-FEED+3 Mobile Sieve



Note:

The mobile sieve has an adjustable height and is suitable for use in different sizes of boxes and hoppers. The sieve micron range can be adjusted and can work in several different modules according to user demand. The user can move the product to the desired point.

Common User Mistakes




- Trying to sieve without grounding the part
- Using high pressure air during cleaning
- Incorrect placement of the sieve

Conformity Between Products

Electron E-FEED+3 Mobile Sieve can be used with the products below:

- Monocyclone
- PM1 / PM2 / PM3 Series
- Hoppers and Recovery Functions
- E-Feed HD

2.2 Technical Data

E-FEED+3 Mobile Sieve	
Input Voltage (Nominal)	110-220 Volt
Frequency	60 Hz
Power	Ultrasonic: 100 W / Vibration Motor: 50 W
Sieves	Ø 400 mm
Working Temperature	0 °C - +40 °C (32 °F - +104 °F)
Ingress Protection	IP 54
Explosion Protection	  

Weight

E-FEED+3 Mobile Sieve	
Weight	45 kg
Weight with Recovery Function	55 kg

Usable Powders

E-FEED+3 Mobile Sieve	
Plastic Coating Powder	Conform
Metallic Coating Powder	Conform
Enamel Coating Powder	Conform

2.3 Mobile Sieve Variants

- Standard Mobile Sieve (Without Recovery Function)
- Standard Mobile Sieve with Recovery Function

Note: All sieve variants are suitable for use with E-Feed HD.

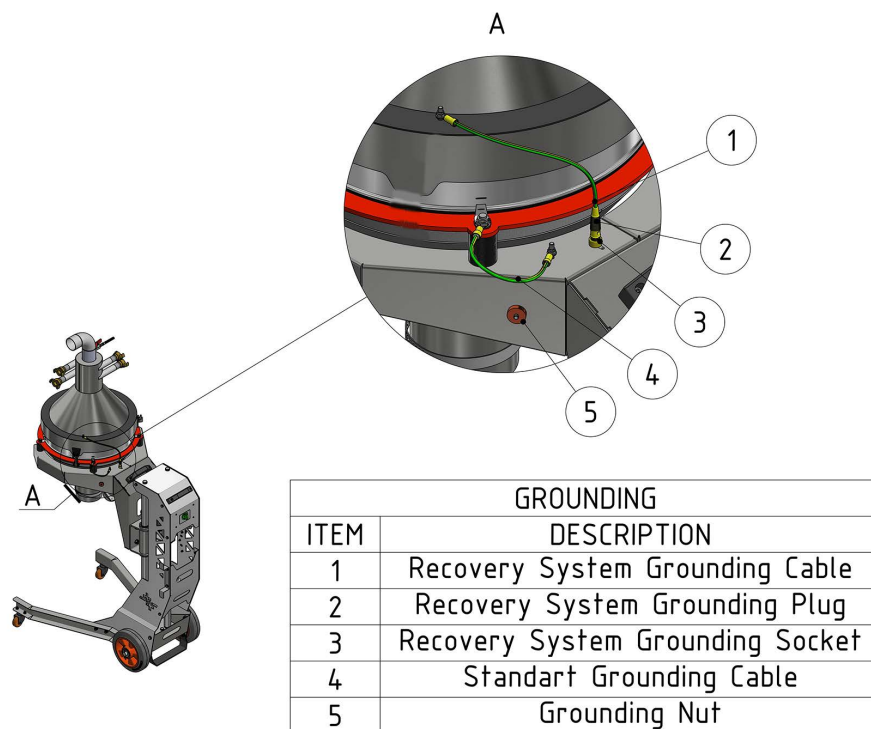
* For more information please check the Spare Parts Selection Guide.

2.4 Technical Specifications

- Static Current Control
- Operating capability from 100 volts to 220 volts
- The recovery module works together with the cyclone and paint management center.
- Mobile
- Adjustable sieve height
- It allows easy filling of boxes and hoppers of different sizes.
- Adjustable sieve height at minimum and maximum level
- Compatible form with ultrasonic sieving
- Fast cleaning through the practical form of the sieve and recovery head
- Different types of sieving sizes (mesh)

	Standard Mobile Sieve (Without Recovery Function)	Conventional Mobile Sieve with Recovery Function
250/400 Micron Sieve	✓	✓
Vibration Motor	✓	✓
Recovery Function	x	✓
E-Feed HD Kit	✓	✓

2.4 Grounding



Strictly follow the instructions below for grounding:

Before operating, make sure that all ground wires of the machine are connected.

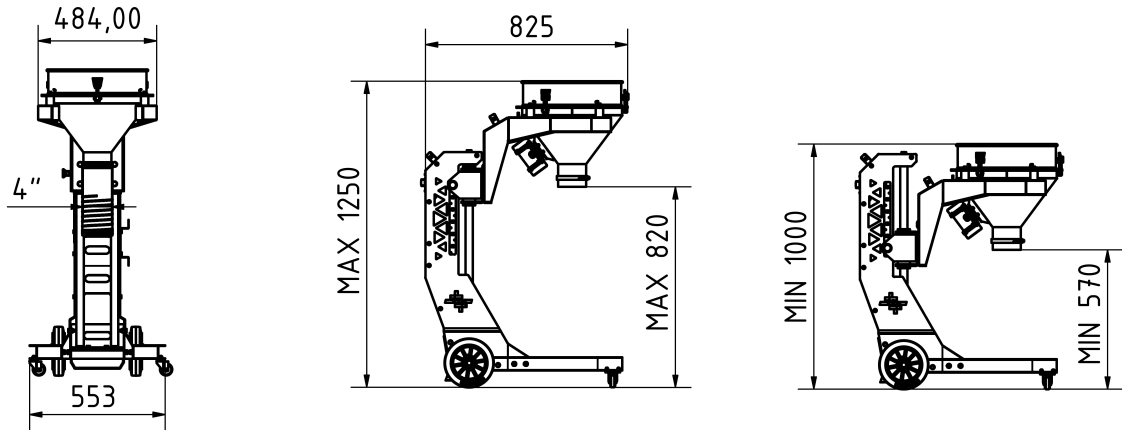
In cases where the recovery module is used, make sure that the ground wire is connected.

While placing the sieve assembly, make sure that the grounding springs are in contact with the sieve body.

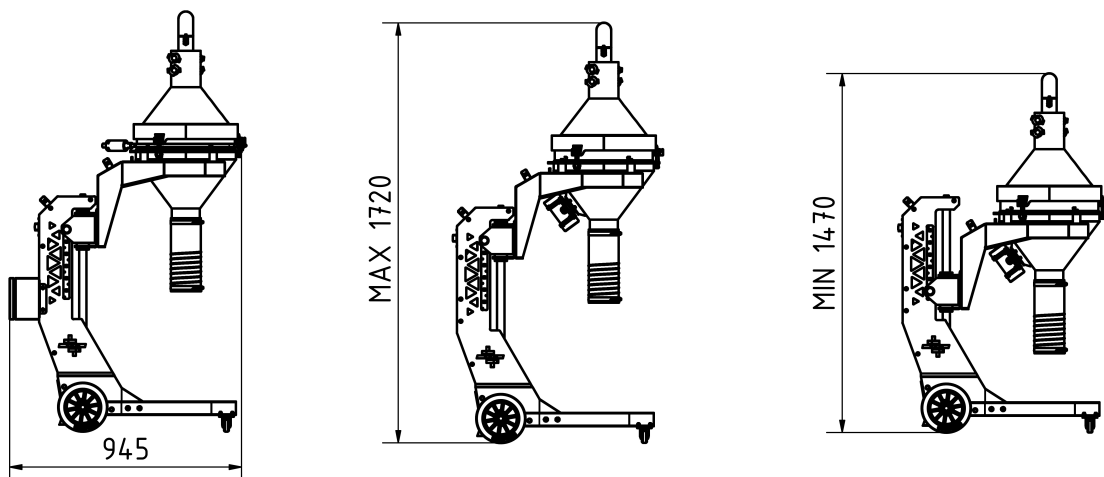
Check the grounding of the powder booth, powder center and cyclone.

2.5 Space Requirements

E-FEED+3 MOBILE SIEVE (STANDART)



E-FEED+3 MOBILE SIEVE (WITH RECOVERY SYSTEM)

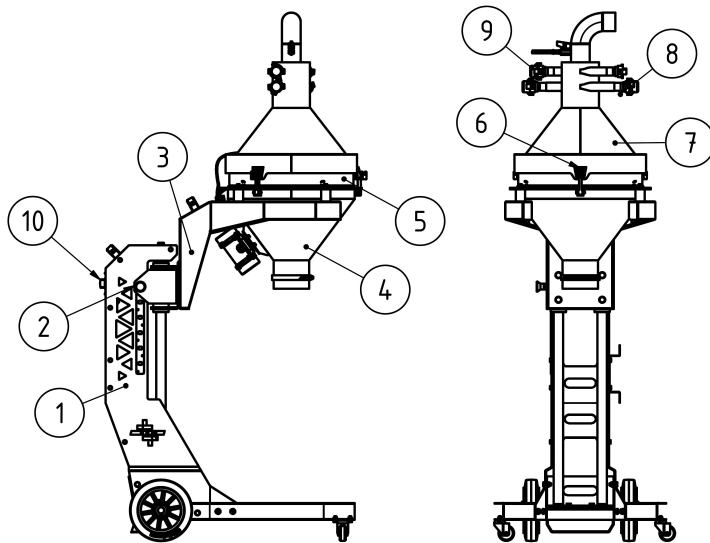


2.6 Installation

The sieve machine must be placed on firm ground.

The sieve assembly should be placed in the chamber with rubber fastener.

Main dust hopper height should be adjusted according to the equipment to be used. If a recovery module is used, the module and the main dust hopper must be fixed directly with rubber fastener (the sieve assembly is not connected with rubber fastener when recovery module is used). The sieve machine must be placed as close as possible to the booth or the filter unit/multicyclone, in order to lay out the venting hoses as straight and short as possible. A curvature or a bend can cause powder deposits or degrade the air flow in such a manner, that powder will be deposit in the inside of the hose.



MAIN PARTS	
ITEM	DESCRIPTION
1	Mobil Sieve Frame
2	Lock Mechanism
3	Lineer Motion Module
4	Main Dust Hopper
5	Sieve Assembly
6	Rubber Fastener
7	Recovery System Module
8	Air Claw Coupling
9	Blind Cap
10	ON-OFF Button

3. Start Up

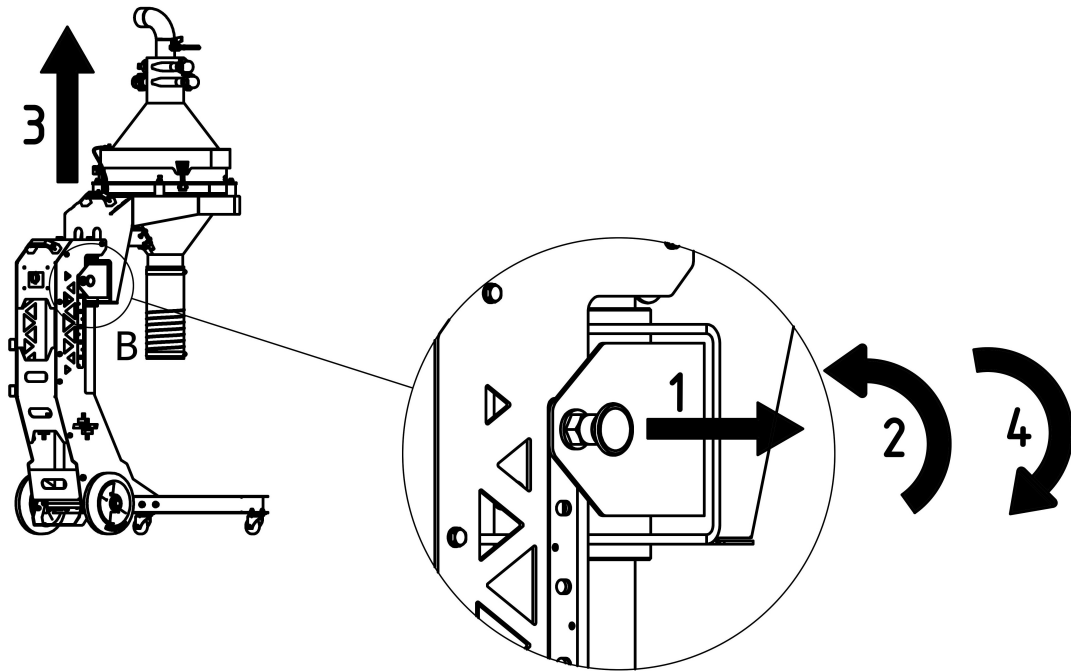
3.1 Operation

Mobile Sieve

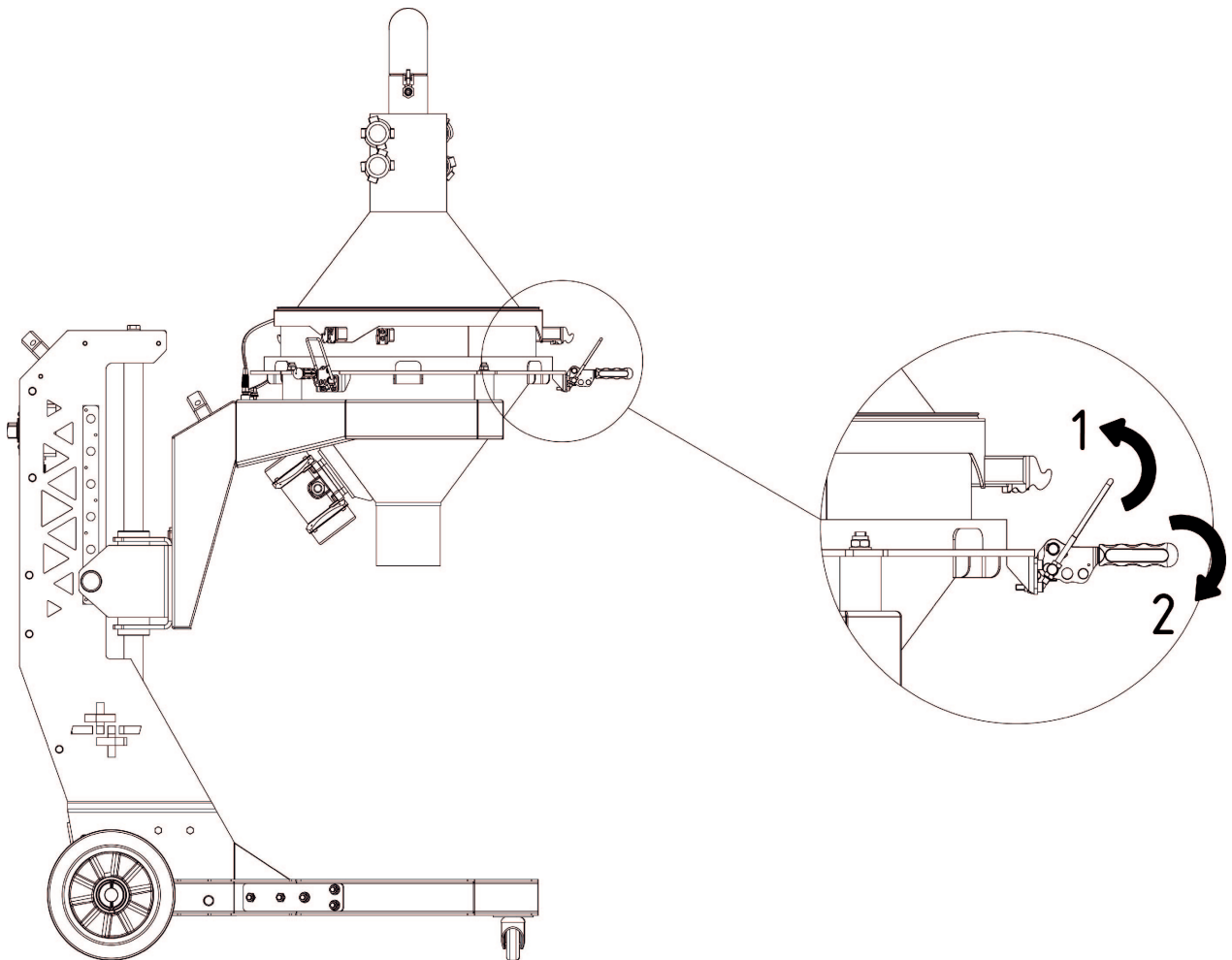
Make sure the ground wires are connected before operating. Adjust the height of the main dust hopper according to the hopper, powder box etc. Make sure that the locking mechanism is correctly placed. Plug in. Set the mobile sieve operating button to the ON position. Slowly pour the paint into the sieve. After the elimination process is completed, set the mobile sieve operating button to the OFF position.

Recovery Function

When using the recovery module, make sure that all ground wires of the machine are connected. Do not operate the device without connecting the grounding plug. After the hose connections, close the unconnected air claw couplings with blind caps.

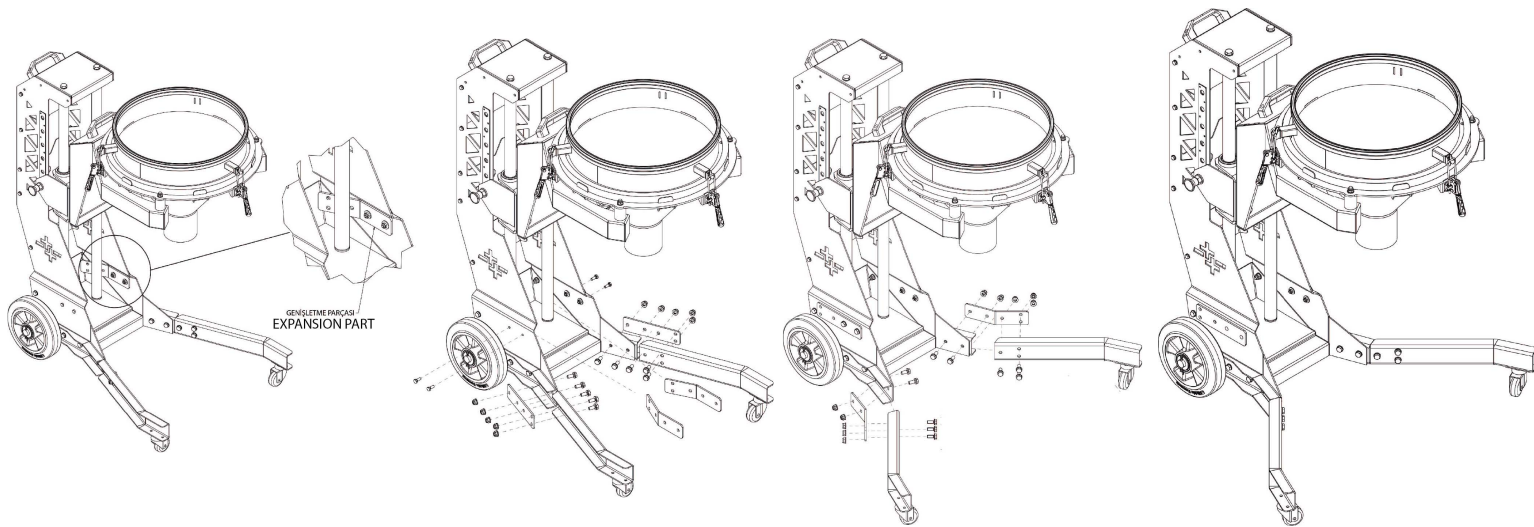


Fixing the Sieve Assembly



Operation of The Locking Mechanism

Wide-Angled Foot Function



1. The expansion piece located in the inner body of the standard type mobile sieve is taken.
2. The standard foot part is removed from the right and left feet of the standard type sieve.
3. The legs are expanded by installing an expansion piece instead.
4. If you want to narrow it down, the same process is applied backwards.

4. Cleaning and Maintenance

4.1 Cleaning

Daily:

- Disconnect the device from electricity. Remove the rubber fastener on the sieve from their sockets.
- Check the sieve for damage. Small holes can be filled with adhesive (i.e. Araldite). Let the adhesive harden before to reinsert the sieve.
- Clean the sieve with air or industrial vacuum cleaner. If air is to be used, its pressure must be low, otherwise it may damage the sieve.
- Clean the sieve chamber and body with low pressure air or industrial vacuum cleaner.

4.2. Maintenance

Vibration Motor

The vibration motor does not require a special maintenance. If the vibration motor must be replaced, make sure that the specifications (mains voltage, mains frequency etc.) are correctly.

5. Powder Coating Capacity Table

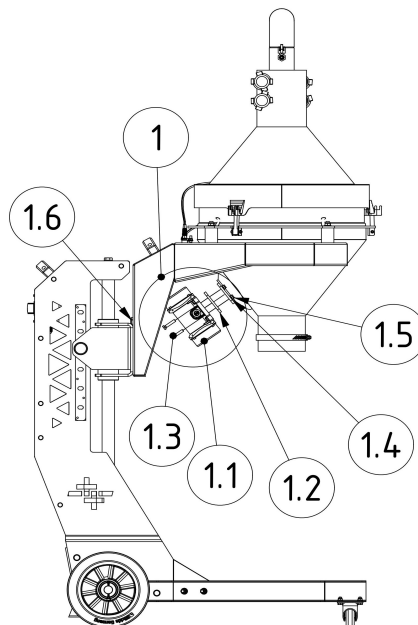


ORDER CODE	PART NAME	Sieving Performance
B07SES003	SE+3 Ø400mm 150 MICRON SIEVE - COMPLETE	up to 2,5 kg/min
B07SES001	SE+3 Ø400mm 250 MICRON SIEVE - COMPLETE	up to 5,5 kg/min
B07SES002	SE+3 Ø400mm 400 MICRON SIEVE - COMPLETE	up to 7 kg/min
B07SES004	SE+3 Ø400mm 550 MICRON SIEVE - COMPLETE	up to 8 kg/min
B07SES005	SE+3 Ø400mm 735 MICRON SIEVE - COMPLETE	up to 9,5 kg/min
B07SES006	SE+3 Ø400mm 1040 MICRON SIEVE - COMPLETE	up to 12 kg/min

Note: All values depend on powder type

6. Spare Parts List

VIBRATION MOTOR



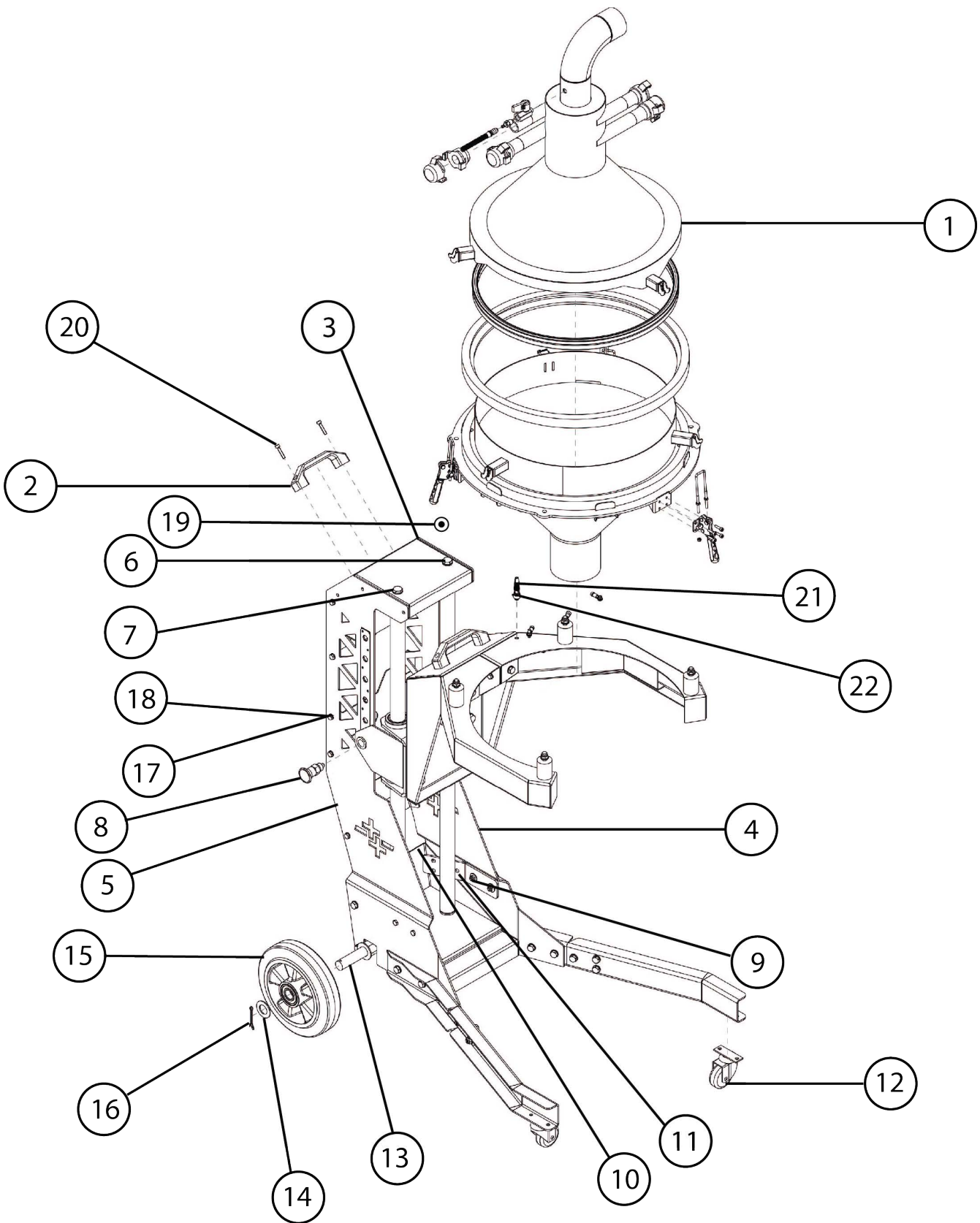
110-220 VOLT

220 Volt Conventional Module

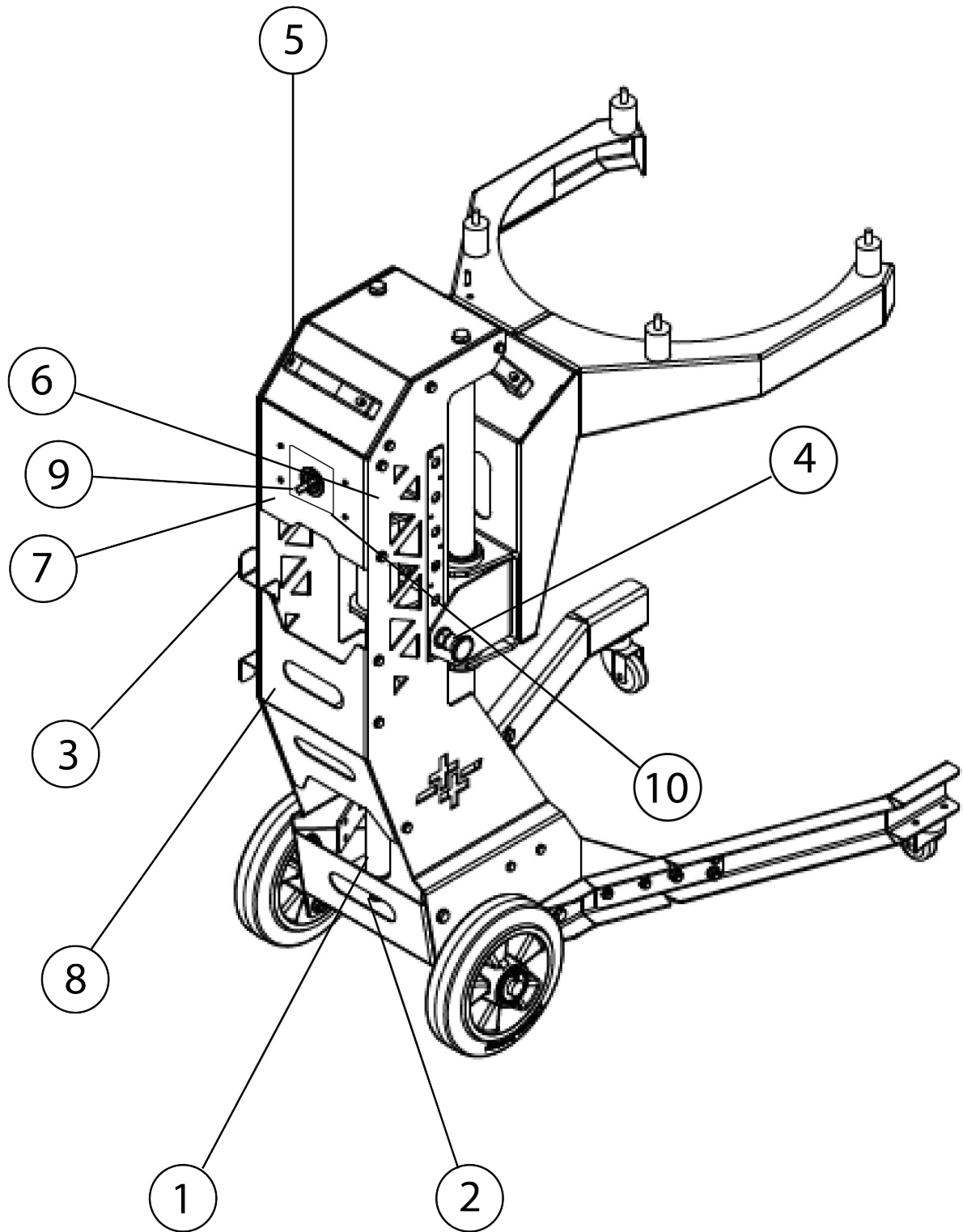
PART #	ORDER CODE	PART NAME	RECOMMENDED STOCK PARTS
1	B07EM10010	E-FEED+3 MOBILE SIEVE 220 V CONVENTIONAL MODULE	N/A
1.1	MPMT03070	VIBRATION MOTOR 50W EX II 3D 220V 50HZ	✓
1.2	TRTM03037	VIBRATION MOTOR FLANGE	N/A
1.3	BECV06006	BOLT M6X30	N/A
1.4	BEPL03004	WASHER M6	N/A
1.5	BESM02003	FIBER NUT M6	N/A
1.6	ELKA03003	CABLE GLAND M16X1,5	N/A

110 Volt Conventional Module

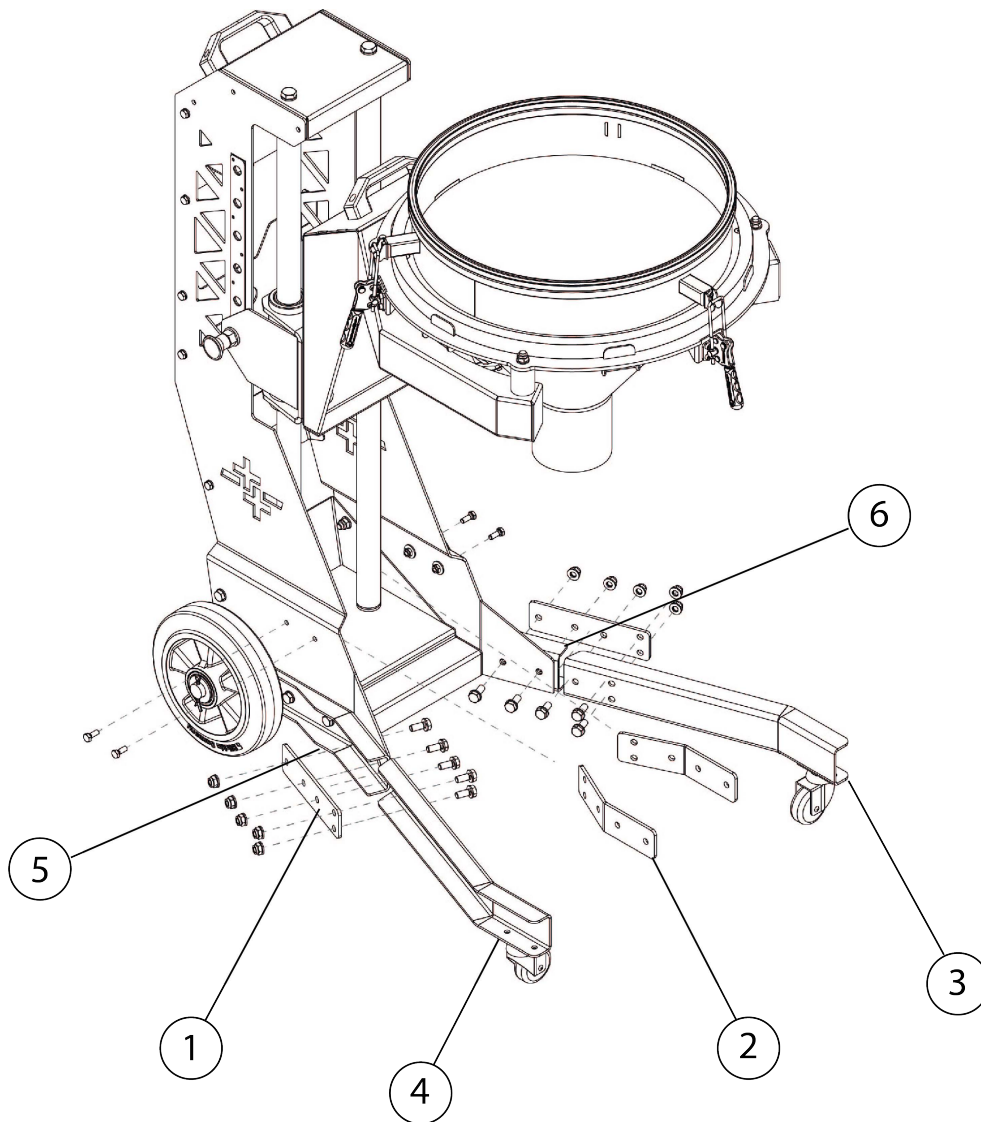
PART #	ORDER CODE	PART NAME	RECOMMENDED STOCK PARTS
1	B07EM10009	E-FEED+3 MOBILE SIEVE 110 V CONVENTIONAL MODULE	N/A
1.1	MPMT03071	VIBRATION MOTOR 70W EX II 3D 110V 60HZ	✓
1.2	TRTM03037	VIBRATION MOTOR FLANGE	N/A
1.3	BECV06006	BOLT M6X30	N/A
1.4	BEPL03004	WASHER M6	N/A
1.5	BESM02003	FIBER NUT M6	N/A
1.6	ELKA03003	CABLE GLAND M16X1,5	N/A



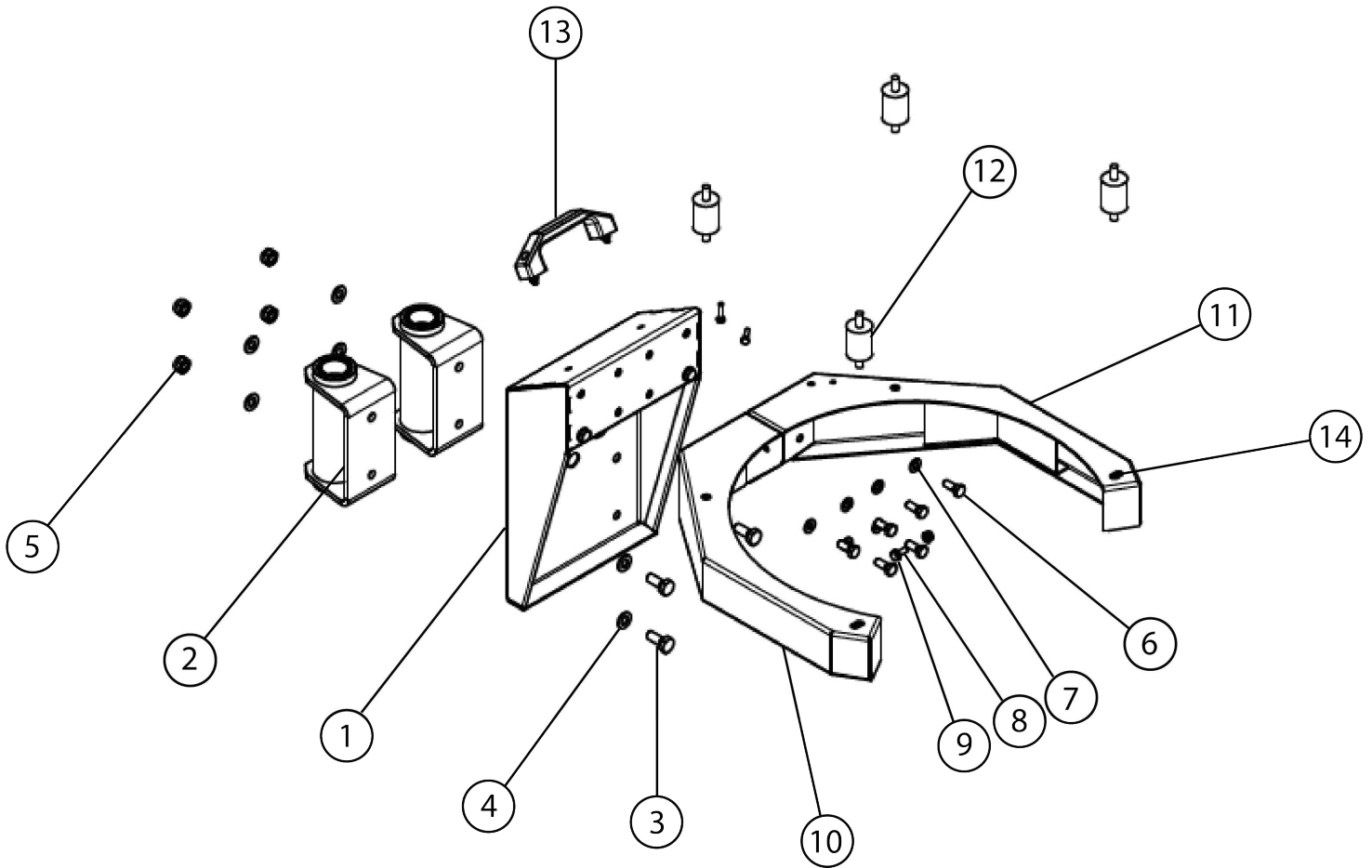
PART #	ORDER CODE	PART NAME	RECOMMENDED STOCK PARTS
1	B07GKS001K	RECOVERY MODULE (COMPLETE)	N/A
2	AKUA02003	HANDLE	✓
3	B07ECSE003	LINEAR GUIDE FIXING PART	N/A
4	B06CE02055	SIDE PART- RIGHT	N/A
5	B06CE02056	SIDE PART - LEFT	N/A
6	BECV06023	HEX HEAD BOLT M10X35	N/A
7	BEPL03006	WASHER M10	N/A
8	AKUA03122	INDEXING PISTON	N/A
9	BESM02001	FIBER NUT M4	N/A
10	B07ECSE002	LOWER BASE PART	N/A
11	B06CE02092	WIDE TYPE FOOT PART	N/A
12	AKUA08006	WHEEL Ø50X20	✓
13	TRTM04048	WHEEL CONNECTING SHAFT	N/A
14	B06CE20043	WHEEL LIMITING WASHER	N/A
15	AKUA08005	WHEEL Ø200X50	✓
16	BEDH15001	COTTER PIN	N/A
17	BECV060074	HEX HEAD BOLT M6X16	N/A
18	BEPL03004	WASHER M6	N/A
19	TRTM05017	GROUNDING NUT(M5X20)	✓
20	BECV03060	HEX SOCHET HEAD BOLT M5X25	N/A
21	ELKS03015	BANANA SOCKET	✓
22	ELKS03014	BORN TERMINAL BLOCK FOR BANANA	✓



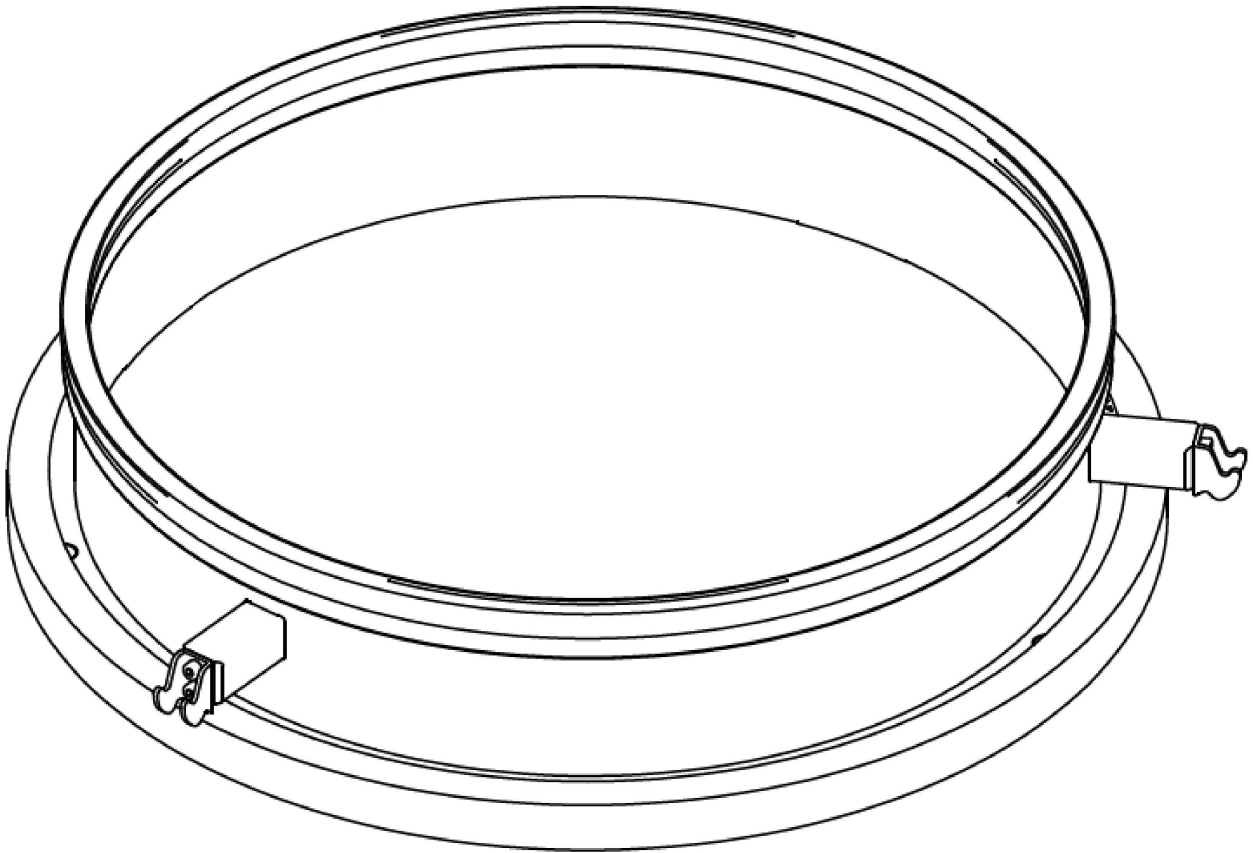
PART #	ORDER CODE	PART NAME	RECOMMENDED STOCK PARTS
1	B10640005	E-FEED+3 MOBILE SIEVE LINEAR GUIDE GROUP	N/A
2	BECV06046	HEX HEAD BOLT M8X40	N/A
3	B06CE02063	CABLE COLLECTOR	N/A
4	B07ECSE005	HOPPER INDEXING PART	N/A
5	BECV03060	CYLINDER HEAD CAP SCREW M5X25	N/A
6	B07ECSE011	INDEXING PROTECTION PART	N/A
7	B07ECSE004	JUNCTION BOX FIXING PART	N/A
8	B07ECSE001	BACK SUPPORT PART	N/A
9	ELBS01002	BUTTON KEY	N/A
10	ETKT03076	E-FEED+3 MOBILE SIEVE LEXAN	N/A



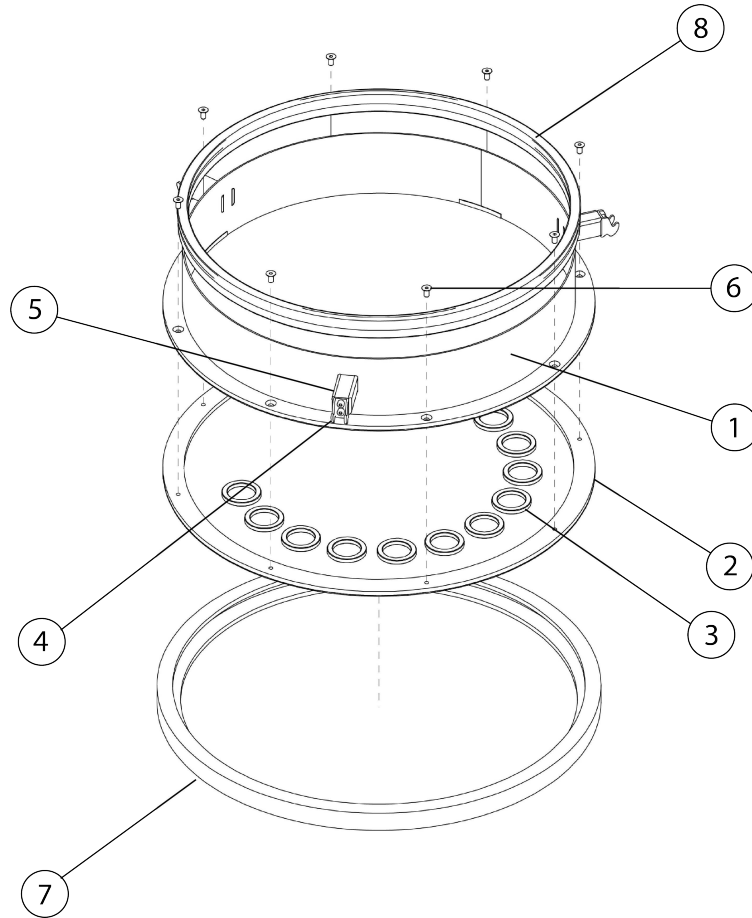
PART #	ORDER CODE	PART NAME	RECOMMENDED STOCK PARTS
1	B06CE02091	STANDARD TYPE FOOT FORMATION PART	N/A
2	B06CE02091	WIDE TYPE FOOT FORMATION PART	N/A
3	B07ECSE006	FRONT FOOT GROUP - RIGHT	N/A
4	B07ECSE007	FRONT FOOT GROUP - LEFT	N/A
5	B06CE02094	BACK FOOT GROUP - LEFT	N/A
6	B06CE02095	BACK FOOT GROUP - RIGHT	N/A



PART #	ORDER CODE	PART NAME	RECOMMENDED STOCK PARTS
1	B06CE02068	LINEAR SIEVE PART	N/A
2	B07ECSE008	LINEAR BUSHING	N/A
3	BECV06028	HEX HEAD BOLT M10X25	N/A
4	BEPL03006	WASHER M10	N/A
5	BESM02001	FIBERED NUT M4	N/A
6	BECV06013	HEX HEAD BOLT M8X20	N/A
7	BEPL03005	WASHER M8	N/A
8	BECV06004	HEX HEAD BOLT M6X15	N/A
9	BEPL03004	WASHER M5	N/A
10	B07ECSE010	FUNNEL SUPPORT LEFT PART	N/A
11	B07ECSE009	FUNNEL SUPPORT RIGHT PART	N/A
12	AKUA03025	VIBRATION INSULATOR	✓
13	AKUA02003	HANDLE	✓
14	BESM02004	FIBERED NUT M8	N/A

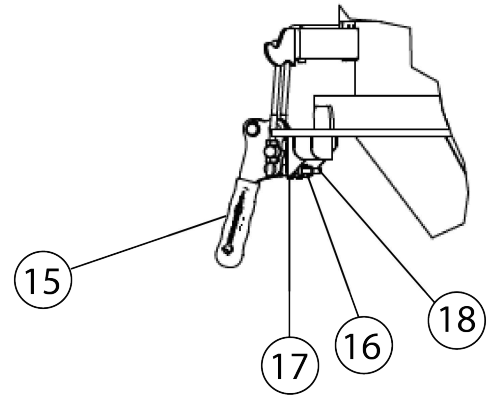
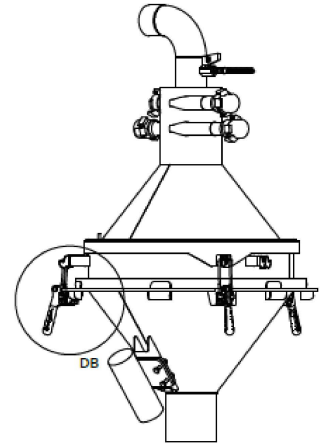
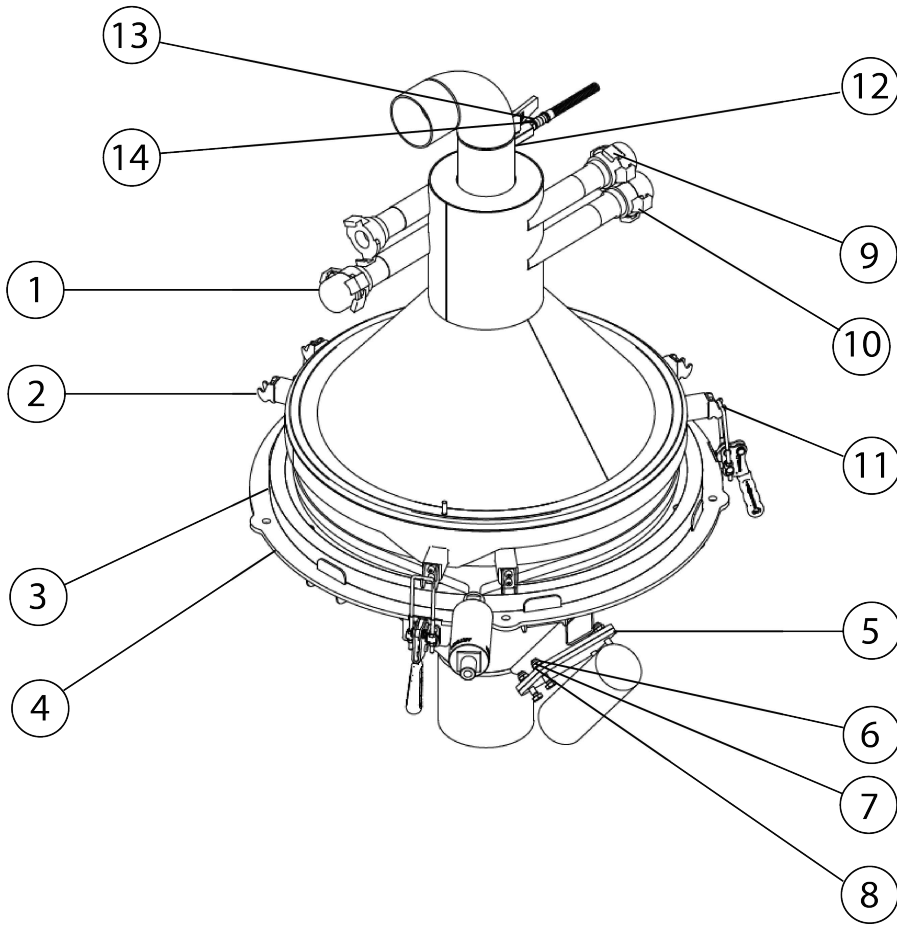


ORDER CODE	PART NAME	RECOMMENDED STOCK PARTS
B07SES001	SE+3 Ø400mm 250 MICRON SIEVE - COMPLETE	✓
B07SES002	SE+3 Ø400mm 400 MICRON SIEVE - COMPLETE	✓
B07SES003	SE+3 Ø400mm 150 MICRON SIEVE - COMPLETE	✓
B07SES004	SE+3 Ø400mm 550 MICRON SIEVE - COMPLETE	✓
B07SES005	SE+3 Ø400mm 735 MICRON SIEVE - COMPLETE	✓
B07SES006	SE+3 Ø400mm 1040 MICRON SIEVE - COMPLETE	✓

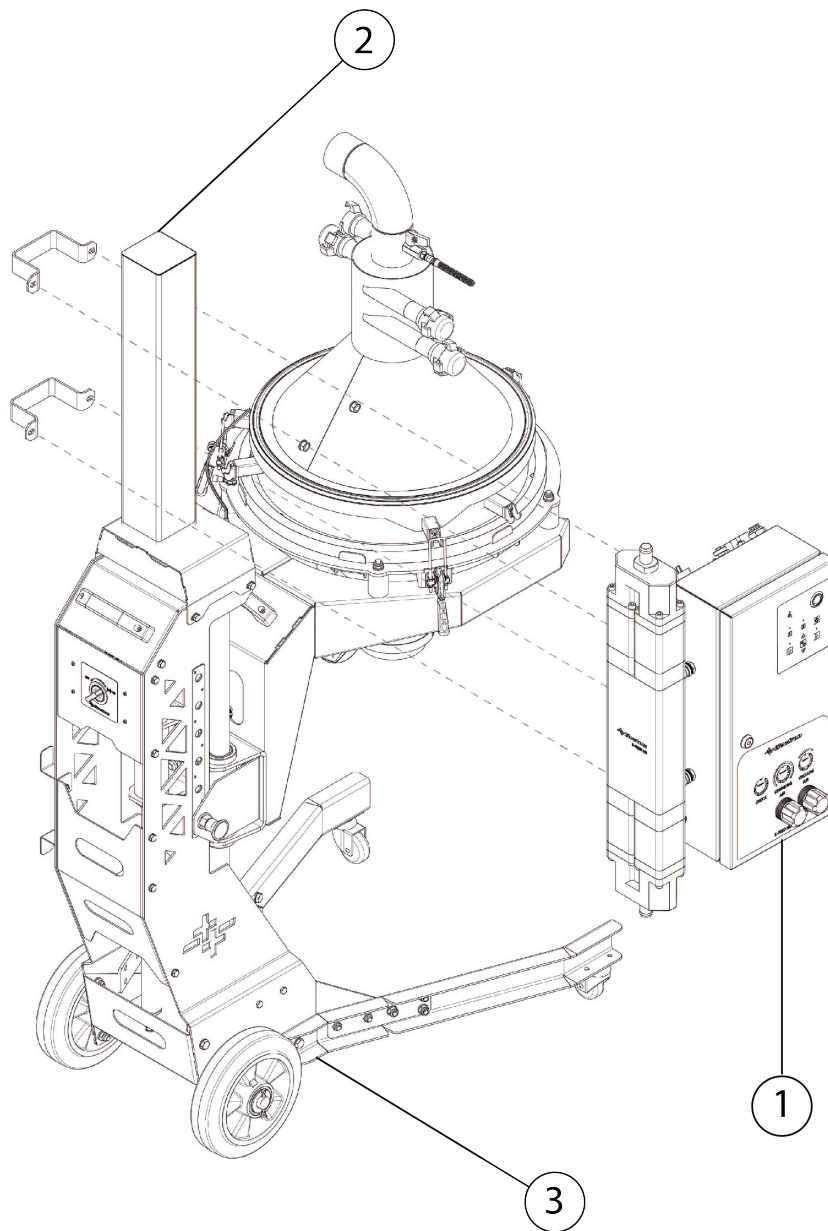


PART #	ORDER CODE	PART NAME	RECOMMENDED STOCK PARTS
*1	B07SES001F	Ø400mm 250 MIKRON SIEVE GROUP - TOP	N/A
**1.1	B07SES002F	Ø400mm 400 MIKRON SIEVE GROUP - TOP	N/A
***1.2	B07SES003F	Ø400mm 150 MIKRON SIEVE GROUP - TOP	N/A
****1.3	B07SES004F	Ø400mm 550 MIKRON SIEVE GROUP - TOP	N/A
*****1.4	B07SES005F	Ø400mm 735 MIKRON SIEVE GROUP - TOP	N/A
*****1.5	B07SES006F	Ø400mm 1040 MIKRON SIEVE GROUP - TOP	N/A
2	B07SES001B	Ø400mm 1200 MIKRON SIEVE GROUP - BOTTOM	N/A
3	B06CE02089	SE+3 SIEVE SUPPORT PART Ø40	N/A
4	AKUA03131	TENSIONING LATCH COUNTER PART	N/A
5	BECV03022	HEX SOCKET HEAD BOLT M4X16	N/A
6	BECV03059	COUNTERSINK WITH HEX HEAD M5X10	N/A
7	IZCS02035	SPECIAL GASKET	✓
8	B07SEC001	EDGE GASKET SE+3 TOP BUBBLE	✓

- *Note: B07SES001F related to B07SES001.
- **Note: B07SES002F related to B07SES002.
- ***Note: B07SES003F related to B07SES003.
- ****Note: B07SES004F related to B07SES004.
- *****Note: B07SES005F related to B07SES005.
- *****Note: B07SES006F related to B07SES006.



PART #	ORDER CODE	PART NAME	RECOMMENDED STOCK PARTS
1	B07GKS001	RECOVERY MODULE (Complete)	N/A
2	B07SES001	E-FFED+3 250 MICRON SIEVE (Complete)	N/A
2.1	B07SES002	E-FFED+3 400 MICRON SIEVE (Complete)	N/A
2.2	B07SES003	E-FFED+3 150 MICRON SIEVE (Complete)	N/A
2.3	B07SES004	E-FFED+3 550 MICRON SIEVE (Complete)	N/A
2.4	B07SES005	E-FFED+3 735 MICRON SIEVE (Complete)	N/A
2.5	B07SES006	E-FFED+3 1040 MICRON SIEVE (Complete)	N/A
3	IZCS02035	SPECIAL GASKET (INCLUDED IN 2, 2.1, 2.2)	✓
4	B07ECSE012	LOWER CONICAL CHAMBER	N/A
5	TRTM03037	MOTOR SUPPORT PLATE	N/A
6	BECV06006	HEX HEAD BOLT M6X30	N/A
7	BESM02003	FIBERED NUT M6	N/A
8	BEPL03004	WASHER M6	N/A
9	PNBE02001	QUICK DISCONNECTOR GEKA TYPE 3/4" FEMALE	✓
10	PNBE02004	QUICK DISCONNECTOR GEKA TYPE 3/4" BLIND	✓
11	AKUA03131	TENSIONING LATCH COUNTER PART	N/A
12	HDHE01001	1-8 INCH FEMALE-MALE BALL VALVE	N/A
13	PNBE01005	1-8 INCH QUICK CONNECTOR MALE BODY	N/A
14	PNBE01002	1-8 INCH QUICK CONNECTOR MALE TIP	N/A
15	AKUA03132	U HOOK CONNECTION PART	✓
16	BECV03022	HEX SOCKET HEAD BOLT M4X16	N/A
17	BESM02001	FIBERED NUT M4	N/A
18	BESM02001	SOCKET BOLT M4X25	N/A



PART #	ORDER CODE	PART NAME	RECOMMENDED STOCK PARTS
1	A05FHD001	E-FEED HD TRANSFER PUMP	N/A
2	B07SEHD001	SE+3 HD MOUNTING KIT	N/A
3	A05SE0030	E-FEED+3 MOBILE SIEVE	N/A

Note: E-FEED HD and its connection kit should be ordered separately.

7. Service and Maintenance Table

DATE	MAINT. TYPE --Weekly --Yearly --Service	MAINT. OR SERVICE PERSONNEL	PROCEDURE CHANGED PARTS NOTES	CONTROL SUPERVISOR

8. Product Life and Warranty

1. Product Life

2. The economic life of the gun is approximately 10 years.
3. This product life is highly dependent on the periodic maintenances and spare part changes in a timely manner. Improper maintenance will lead to lower product life.
4. SİSTEM TEKNİK A.Ş. warrants supplying the needed service and the spare parts for the entire product life.

2. Warranty and Warranty Conditions

- The gun is warranted for production and parts failure for 2 (two) years.
- Spare parts that are changed from the warranty are free-of-charge.
- The parts that are supplied in the system which are not produced by SİSTEM TEKNİK A.Ş. are warranted with their own manufacturers and their own conditions.
- SİSTEM TEKNİK A.Ş. will not be held responsible for the improper usage of the machine or any unauthorized usage. These are not in the warranty.

3. Operating Conditions

- Read the user manual before using the gun.
- Only legally allowed people can operate the gun.
- Only trained and authorized people can operate the gun.
- SİSTEM TEKNİK A.Ş.'s suggested spare parts should be used at all times.
- Proper maintenance has to be done and the spare parts has to be changed in a timely manner
- The operational safety has to be assured by the customer; the operators who are not capable of working under safety rules shouldn't be operating the Control Unit.
- All the suggestions and warnings in this manual have to be carefully considered and applied.



Merkez Ofis

PERPA Tic. Mer. B-Blok Kat:2 No:65
34385, Okmeydanı – İSTANBUL/TÜRKİYE

Telefon: +90 (212) 222 23 45
Mail: info@electron.com.tr

Fabrika

İTOB Org. San. Bölgesi 10010 Sk. No:10
35470, Menderes – İZMİR/TÜRKİYE

Telefon: +90 (232) 799 02 32
Fax: +90 (232) 799 02 42